



Statement of Qualifications

THE TRIBUTE COMPANIES

Design | Build | Supply | Own | Operate | Consult



CORPORATE OFFICE

Tribute Precast Systems, LLC
352 Cottonwood Ave
Hartland, Wisconsin 53029
(262) 367-9991

ILLINOIS PLANT

950 West Winneshiek Road
Freeport, IL 61032

INDIANA PLANT

110 Canopy Drive
Ashley, IN 46705

CONTACT

Christine Toson, cce
President/CEO
christiet@tributeinc.com

PRODUCTS & SERVICES

Architectural services and renderings, consulting and management services, precast burial products including concrete outer burial containers (vaults), mausoleum crypts, cremation niches, septic tanks and cemetery accessories.

COMPANY OVERVIEW

The Tribute Companies is your single point of contact for cemetery products and services that enhance your operation's revenue, expansion or development. As a family owned and operated business for four generations, we continue to honor our commitment of supporting cemeteries for successful operations now and for many generations to come. By exceeding the expectations of cemetery owners and managers – and the families they serve - our clients trust us to provide ongoing operational support and assistance as well as to expertly handle future projects from construction to management to consulting. The Tribute Companies consists of the following divisions:

TRIBUTE DESIGN SYSTEMS

Tribute Design Systems is a full-service architectural firm with licensed architects and accredited planners. Our experienced staff is qualified to address the unique challenges of 21st century cemetery planning. Services include:

- Funeral Home, Life Center and Cemetery Architecture and Land Planning
 - Cemetery Master Planning
 - Cemetery Site Planning
 - Design and Build for Administration Buildings
 - Design and Build for Maintenance Facilities
 - Design and Build for Chapel Buildings, which may or may not include cemetery inventory.
 - Mausoleum Design and Construction
 - Columbarium Niche Design and Construction
 - Cremation Garden Design and Development



- Existing Cemetery Inventory Enhancement and Expansion
- Section Design and Computer Mapping
- Preparation of Construction Documents
- Budgeting and Cost Analysis
- Cemetery, Life Center, Cremation Garden and Funeral Home Construction Administration

Tribute's architects provide creative and resourceful design services and partner with leaders within the profession to make certain your operation's design provides practical solutions to best serve your families and the communities. Tribute understands the importance of communicating with its clients throughout the design process to ensure ideas, visions and goals are met while working within a specific budget.

Construction Administration

During construction we interview, select and negotiate qualified subcontractors and suppliers who are aligned with our philosophy and quality standards. We administer all subcontracts, material suppliers and associated engineering and testing firms to ensure project compliance.

Onsite Supervision

Tribute project managers have the expertise and experience to properly manage budgets, schedules and client expectations to deliver a complete and successful project. They look out for our clients' best interest in the project and manage potential issues before they become a problem.

TRIBUTE PRECAST SYSTEMS

Tribute owns and operates a state-of-the-art division that manufactures the best quality precast burial products in the industry including:

- Mausoleum Crypts
- Columbarium Niches
- Lawn Crypts
- Outer Burial Containers/Vaults
- Cemetery Accessories

All Tribute precast concrete manufacturing facilities are certified by the National Precast Concrete Association (NPCA) which requires stringent standards in the manufacturing quality and safety process



Tribute Precast has serviced the Death Care Industry for over sixty-three years. The original company, known as "Freeport Vault" was founded in 1939. The Tribute Companies acquired ownership in 1983 and, shortly thereafter, began introducing new precast concrete products to benefit its broad client base.

Tribute has successfully completed numerous veteran's cemetery projects requiring preparation of construction documents and the manufacture, delivery and installation of single and double depth lawn crypts and columbarium niches. In addition to veteran's cemeteries, we have completed projects for private and church owned cemeteries throughout the United States and Canada. Our experience involves the supply and installation of our precast products, including our engineered modular crypt and niche systems, as well as supply and installation of granite and marble closure systems.

The Tribute Companies, Inc. was recently certified as a Woman Owned Business in the state of Wisconsin.

PAST PERFORMANCE & EXPERIENCE

Attached, we have highlighted a number of project examples of our most recent supply and/or supply and installation projects for review. We invite you to contact our references or Tribute with any questions you may have.

This is to certify that the quality control procedures of

Tribute Precast Systems LLC

110 Canopy Drive
Ashley, IN 46705-3500

were audited during an on-site plant inspection on May 12, 2022 and have met the

Precast Concrete Requirements

stated in the 15th Edition of the NPCA Quality Control Manual for Precast Concrete Plants

Renewal Granted on December 12, 2022

Participation in the NPCA Plant Certification program affirms an ongoing commitment to producing quality precast concrete products to recognized standards of the *American Association of State Highway and Transportation Officials (AASHTO)*, the *American Concrete Institute (ACI)*, the *ASTM International (ASTM)*, the *American Welding Society (AWS)*, the *Precast Prestressed Concrete Institute (PCI)*, and the *Concrete Reinforcing Steel Institute (CRSI)*.

This renewal certificate is valid through December 31, 2023.



nPCA
CERTIFIED PLANT



Joel Sheets, Chairman of the Board

Phillip B. Cutler, P.E., Director of Quality Assurance Programs

Frederick H. Grubbe, NPCA President

NPCA | 1320 City Center Drive, Suite 200 | Camel, IN 46032
This document shall be reproduced in its entirety

This is to certify that the quality control procedures of

Tribute Precast Systems LLC

950 W. Winneshiek Road
Freeport, IL 61032-8979

were audited during an on-site plant inspection on January 9, 2023 and have met the

Precast Concrete Requirements

stated in the 15th Edition of the NPCA Quality Control Manual for Precast Concrete Plants

Participation in the NPCA Plant Certification program affirms an ongoing commitment to producing quality precast concrete products to recognized standards of the *American Association of State Highway and Transportation Officials (AASHTO)*, the *American Concrete Institute (ACI)*, the *ASTM International (ASTM)*, the *American Welding Society (AWS)*, the *Precast Prestressed Concrete Institute (PCI)*, and the *Concrete Reinforcing Steel Institute (CRSI)*.

This certificate is valid through December 31, 2023.



nPCA
CERTIFIED PLANT



Joel Sheets, Chairman of the Board

Frederick H. Grubbe, NPCA President

Phillip B. Cutler, P.E., Director of Quality Assurance Programs

NPCA | 1320 City Center Drive, Suite 200 | Carmel, IN 46032
This document shall be reproduced in its entirety



STATE OF WISCONSIN
DEPARTMENT OF ADMINISTRATION

Tony Evers, Governor
Kathy Blumenfeld, Secretary-Designee
Jana Steinmetz, Administrator

RECERTIFICATION

WI-8129 - WBE

**The Department of Administration
Division of Enterprise Operations
having determined that**

The Tribute Companies

*Has successfully met the certification requirements as outlined in
Wisconsin Administrative Code Adm. 83 and the policies adopted thereunder,
hereby grants the designation of*

Woman-Owned Business Enterprise

and is recognized as such until the expiration of registration and certification on

Expiration: May 7, 2025

NAICS Codes:

Error: Subreport could not be shown.

NIGP Codes:

See online business directory at: <https://wisdp.wi.gov>

Product:

Cemetery ownership, management, development, design. Precast concrete products distributed to cemeteries. Architectural and construction services for cemeteries, funeral homes, etc.

Authorized By: *Libby Schmiedlin*

Libby Schmiedlin
Equal Opportunity Specialist



PROJECT I:

Phase IV – Columbarium
Southern Wisconsin Veterans Memorial Cemetery | Union Grove, WI



Tribute Precast Systems supplied and installed 3,600 columbarium niches and granite niche fronts and trim for this project completed in fall 2014.



PROJECT II:
Phase I – Columbarium
Fort Custer National Cemetery | Augusta, Michigan



Tribute Precast Systems supplied and installed 2,560 columbarium niches and granite niche fronts for this project that started in 2015.



PROJECT III:

John Sevier State Veteran Cemetery | Knoxville, TN



Tribute Precast Systems supplied and installed 900 precast columbarium niches and granite niche fronts for this project completed in summer 2018.



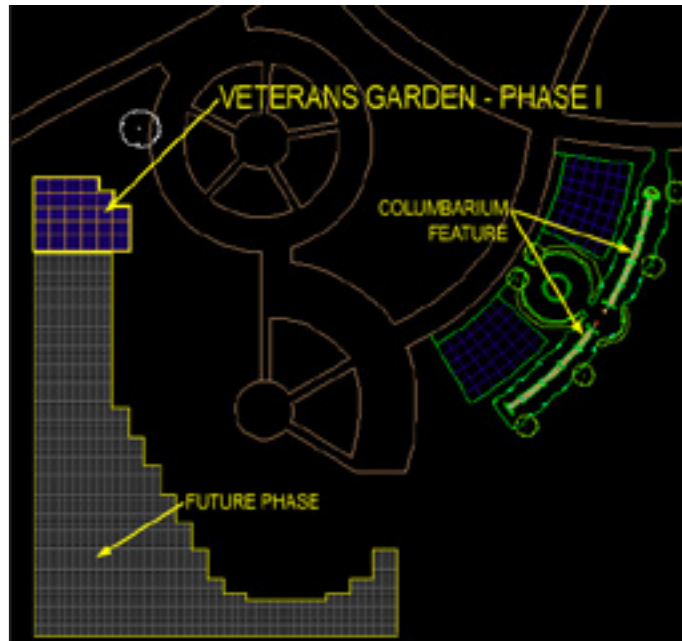
PROJECT IV:
Duluth Veteran Cemetery | Duluth, MN



Tribute Precast Systems supplied and installed 900 precast columbarium niches and granite niche fronts for this project completed in summer 2017.

PROJECT V:

Phase I Veterans Lawn Crypt Garden
Oak Ridge Cemetery | Springfield, Illinois



Master Plan



Rendering – Phase I

Tribute Precast provided the lawn crypts for this project.
Project budget was approximately \$1.2 Million.

PROJECT VI:

Northern Wisconsin Veterans Memorial Cemetery | Spooner, WI



Facility design and development included approximately 2,500 lawn crypts and 800 niche spaces. Tribute Precast Systems provided all precast lawn crypts and niches. Construction cost was \$3.6 Million and substantial completion was March 2001.

PROJECT VII:

Phase III B – Lawn Crypt Garden Expansion Supply & Installation
Southern Wisconsin Veterans Memorial Cemetery | Union Grove, WI



Tribute Precast Systems supplied and installed 3,484 lawn crypts for the garden expansion at the Southern Wisconsin Veterans Memorial Cemetery. This phase had a construction cost of \$1.14 Million and was completed in 2010.



PROJECT VIII:

Phase III – Columbarium/Flag Plaza Development
Southern Wisconsin Veterans Memorial Cemetery | Union Grove, WI





Tribute Precast Systems supplied and installed 1,792 columbarium niches and also installed granite materials for the project. The columbarium portion of this phase was completed in 2009 with a construction cost of \$750,000.

PROJECT IX:

Phase II – Lawn Crypt Garden Expansion
Southern Wisconsin Veterans Memorial Cemetery | Union Grove, WI



-  Phase II Single Depth Lawn Crypt Installation
-  Phase II Double Depth Lawn Crypt Installation

Tribute Precast Systems was awarded the contract to manufacture 1,643 double depth lawn crypts and 1,607 single depth units plus consult on installation with a local excavator. Project budget was approximately \$2.5 Million.

PROJECT X:

Southern Wisconsin Veterans Memorial Cemetery | Union Grove, WI



Tribute Precast Systems provided 4,650 lawn crypts and approximately 1,000 columbarium niches for the first phase of construction at the cemetery. Construction cost was \$4.7 Million with substantial completion in June 1998.

PROJECT XI:

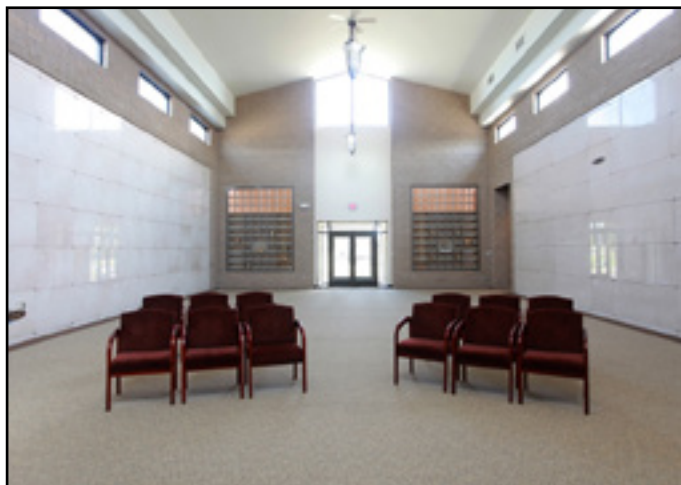
Garden of The Ascension Mausoleum
Resurrection Cemetery | Clinton Township, MI



Completed in fall of 2013, Garden of The Ascension is a mausoleum complex configured in multiple radius style buildings of varying height and size. The largest buildings contain covered walkways with interior and exterior crypt spaces. In total, this garden mausoleum is comprised of 2,408 casket spaces and 2,632 urn spaces and includes a 2,000 sq. ft. committal plaza.

Mausoleum crypts and niches were supplied and installed by Tribute Precast Systems. Tribute Design Systems was the architect and The Tribute Companies was the general contractor. Construction cost was \$7 Million.

PROJECT XII:
Chapel Mausoleum Addition
Detroit Memorial Park | Redford, MI



A chapel mausoleum was added onto a high, 200+ crypt garden mausoleum. The unifying structure consists of 282 crypts and 304 niches provided by Tribute Precast Systems. Tribute Design Systems was the architect and The Tribute Companies was the general contractor. Construction cost was \$1.3 Million with completion in 2009.



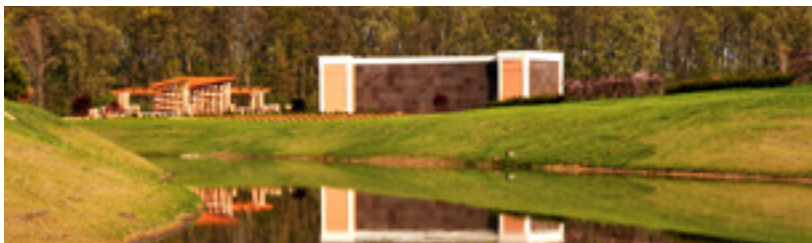
PROJECT XIII:
Mausoleum Renovation & Columbarium Addition
Resurrection Cemetery | Geneva, Illinois



Tribute Precast Systems supplied and installed in 2014; project cost \$515,000.

PROJECT XIV:

Garden Mausoleum & Private Estates Freedom Plaza
Columbarium development The Gardens at Olive Branch | Greenwood, IN



The radius style mausoleum is designed to be constructed in multiple phases of 364 crypts and 192 niches each. Tribute Precast Systems provided the crypts and niches for this first phase in 2009. Tribute Design Systems was the architect and The Tribute Companies was the general contractor.

Tribute was also involved in all aspects of the "Freedom Plaza" planning and construction.

Total Development Costs to Date: \$2.0 Million

PROJECT XV:
Multi-Story Mausoleum Addition
Holy Rood Cemetery | Westbury, NY



Tribute Precast Systems supplied and installed 3,300 mausoleum crypts and 576 columbarium niches as well as installed the granite fronts and trim for the structures. Project cost was approximately \$2.0 Million and was completed in 2010.

PROJECT XVI:

Multi-Story Chapel Mausoleums & Guardian Angel Cemetery
Oakland Township, MI



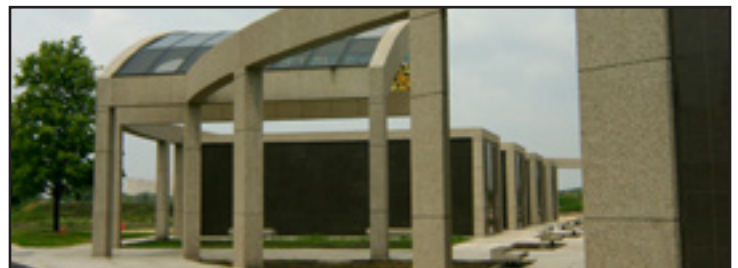
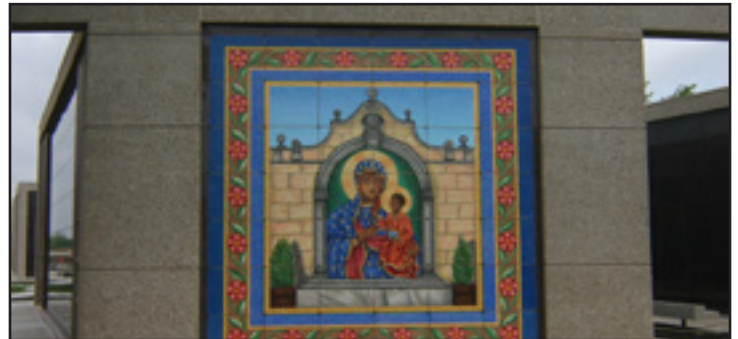
Tribute Precast Systems supplied over 9,000 crypt spaces and 8,000 columbarium niche spaces for structures owned by the Mt. Elliot Cemetery Association. These projects were completed in 2004 and cost was approximately \$1.8 Million.

PROJECT XVII:
Garden Mausoleum and Fountain
Mound Cemetery | Racine, WI



Tribute Precast Systems supplied and installed 440 mausoleum crypts and 480 columbarium niches as well as supplied and installed the granite fronts and trim for the structures. Project cost was approximately \$500,000 with a completion date in 2008.

PROJECT XVIII:
Garden Mausoleum
Mary Hill Cemetery | Niles, IL



Tribute Precast Systems supplied and installed 3,213 mausoleum crypts and 1,252 niches for a total of 14 buildings in this single development. Completed in 2006; project cost was approximately \$850,000.

PROJECT XIX
Resurrection Cemetery
Prince of Peace Columbarium



Tribute Design Systems designed and built these 552 niche columbariums along with the installation of granite niche fronts. Completed fall 2017.



PROJECT XX
Crypts & Niches
Canarsie Cemetery | Brooklyn, NY



Tribute Design Systems designed and built a multi phase mausoleum and columbarium development of 1,800 precast mausoleum crypts and 1,000 columbarium niches. Phase 1-3 completed in 2017.

PROJECT XXI

Facility Design, Production & Development
Queen of Peace Cemetery | Old Westbury, NY



Tribute Design Systems performed facility design, production and development including a 12,749 sqft Committal Chapel with occupancy for 360 persons, a 14,983 sqft Cemetery Administration Office Building, a 9,116 sqft Maintenance / Shop building and ten mausoleum structures containing 1,920 casket spaces and 2,200 urn spaces. Construction cost estimated at \$20 Million with completion in 2022.

PROJECT XXII
Niches
Iowa Veterans Cemetery | Adel, IA



Tribute Precast Systems supplied and installed 1,728 precast columbarium niches and installation of granite niche fronts for this project completed in Spring of 2021.

PROJECT XXIII

Niches

Bloomfield Veterans Cemetery | Bloomfield, MO



Tribute Precast Systems supplied and installed 960 precast columbarium niches for this project completed in Spring of 2021.



PROJECT XXIV

Niches

Ohio Western Reserve Veterans Cemetery | Seville, OH



Tribute Precast Systems has supplied a portion and is currently installing 9,350 precast columbarium niches. Later in 2021, Tribute will be installing granite niche fronts for this project to be completed in Fall of 2021.



FEATURE PROJECT EXAMPLES

Contact Information



NORTHERN WISCONSIN VETERANS MEMORIAL CEMETERY

Phase I Development

Owner | State of Wisconsin

Project Manager | State of Wisconsin

SOUTHERN WISCONSIN VETERANS MEMORIAL CEMETERY

Phase I Development

Phase II Lawn Crypt Supply

Phase III Columbarium Supply & Installation

Phase III (B) Lawn Crypt Supply & Installation

Phase IV Columbarium Supply & Installation

Owner | State of Wisconsin

Project Manager | State of Wisconsin

RESURRECTION CEMETERY

Garden Mausoleum

Owner | Mt. Elliot Cemetery Association

Architect | Tribute Design Systems

General Contractor | The Tribute Companies

DETROIT MEMORIAL PARK

Chapel Mausoleum Addition

Architect | Tribute Design Systems

Project Manager | The Tribute Companies

General Contractor | The Tribute Companies

THE GARDENS AT OLIVE BRANCH

Cemetery Design & Development / Garden Mausoleum / Feature Columbarium

Architect | Tribute Design Systems

Project Manager | The Tribute Companies

General Contractor | The Tribute Companies



HOLY ROOD CEMETERY

Mausoleum Addition

Owner | Diocese of Rockville Centre

GUARDIAN ANGEL & RESURRECTION CEMETERIES

Mausoleums

Owner | Mt. Elliot Cemetery Association

MOUND CEMETERY

Garden Mausoleum & Fountain

Owner | City of Racine, Wisconsin

Project Manager | Jon Pingitore at Bane Nelson Construction

MARY HILL CEMETERY

Garden Mausoleums

Owner | Catholic Cemeteries of Chicago

RESURRECTION CEMETERY

Garden Mausoleum - Columbarium

Owner | Rockford Diocese

RESURRECTION CEMETERY

Garden Mausoleum - Columbarium

Owner | Mt. Elliott Group



CHRISTINE A. TOSON, CCE
President/CEO



PRESENT

2012 – Current President of the Tribute Companies | Hartland, WI
Responsibilities include: overall management of all divisions of The Tribute Companies.

PREVIOUSLY

2000 – 2012 Vice President of Tribute Cemetery Systems | Hartland, WI
1999 – 2000 General Manager, Pinelawn Memorial Park | Milwaukee, WI
1996 – 1999 Family Service Counselor, Pinelawn Memorial Park | Milwaukee, WI
1994 – 1996 Corporate Training Assistant, The Tribute Companies | Delafield, WI

EDUCATION

- Keller Graduate School
Master of Business Administration Degree, Graduated with Distinction
- Marquette University | Milwaukee, WI
Bachelor of Arts Degree in Psychology
Minor in Philosophy
Minor in Spanish
- ICCFA University Graduate – Memphis, TN

LICENSES/CERTIFICATIONS

- Licensed Insurance Agent
- Certified Cemetery Executive – certification given by the International Cemetery and Funeral Association

CIVIC AFFAIRS

- President of the International Cemetery, Cremation and Funeral Association 2018-2019
- Officer for International Cemetery Cremation and Funeral Association
- Past President Wisconsin Cemetery Association
- Past President Central States Cemetery Association
- Head of Wisconsin Cemetery Consumer Service Council
- Current Board Member for Roger's Behavioral Health Foundation | Oconomowoc, WI
- Past Board of Director and Youth Exchange Officer for Lake Country Rotary

AWARDS

- Governor Walker Trailblazer Award for Female Entrepreneurs 2014
- Hall of Fame Recipient at Kettle Moraine High School, Wales, WI, 2014
- Lake Country Rotary Trailblazer Award 2012



ZACHARY D. RASMUSSEN, AIA, NCARB
Manager of Design, Precast & Construction



PRESENT

2019 – Current Manager of Design, Precast & Construction
Tribute Design Systems | Hartland, WI

Responsibilities include: cemetery and funeral home design and architectural services, manage precast concrete supply chain and distribution, oversight of two precast concrete production plants in Freeport, IL and Ashley, IN and management of general contracting projects.

PREVIOUSLY

2017 – 2019 Project Managing Architect, Tribute Design Systems | Hartland, WI
2014 – 2016 Development Project Manager, Aptura Direct Supply | Milwaukee, WI
2011 – 2014 Project Architect / Manager, American Design Inc. | Milwaukee, WI
2007 – 2011 Sole Proprietor / Architectural Intern, Trusst Design | Wisconsin

EDUCATION

- University of Minnesota College of Architecture and Landscape Architecture | Minneapolis, MN
Bachelor of Science in Architecture
Minor in Construction Management
- University of Wisconsin School of Architecture & Urban Planning | Milwaukee, WI
Masters of Architecture
Historic Preservation Certificate

DESIGN EXPERIENCE

- Canarsie Cemetery (Various phases) – 1,800 Crypt/400 Niche | Brooklyn, NY
- Northlawn Memorial Gardens – 280 Crypt/510 Niche Chapel Mausoleum Addition | Peninsula, OH
- Queen of Peace Cemetery – Committal Chapel, Administration Building, 2,000 Crypt/2,000 Niche Mausoleum and Maintenance Facility | Old Westbury, NY

CONSTRUCTION EXPERIENCE

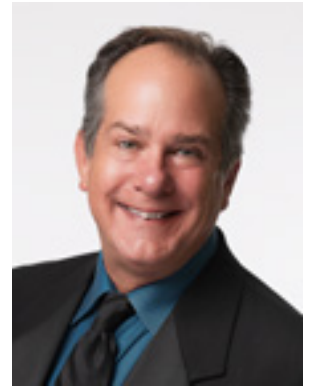
- All Saints Cemetery – 770 Crypt/360 Niche Mausoleum | Pittsburgh, PA
- Canarsie Cemetery (Various phases) – 1,800 Crypt/400 Niche | Brooklyn, NY
- Angelcrest Cemetery – 150 Crypt/450 Niche, Multi-story Mausoleum | Valparaiso, IN
- Ohio Western Reserve National Cemetery – 9,350 VA Niches | Seville, OH

PROFESSIONAL CERTIFICATIONS

- OSHA 40-Hour Training
- National Council of Architectural Registration Boards (NCARB) Certification
- Current/Previously Licensed Architect: GA, IL, IA, MI, NM, NY, OH and WI



JOHN TROJAN
Project Manager / Construction Superintendent



PRESENT

2021 – Current Project Manager / Construction Superintendent
The Tribute Companies | Hartland, WI

Responsibilities include: bidding and estimating new construction projects as well as traveling throughout the United States to manage and supervise construction projects with the Tribute team of installation specialists.

PREVIOUSLY

2019 – 2021 Project Manager, Sawall Development | Sussex, WI
2016 – 2018 Project Manager, Skyrise Construction Group | Menomonee Falls, WI
2013 – 2015 Project Manager, Paul Davis Restoration & Remodeling | Milwaukee, WI

RECENT PROJECT EXPERIENCE

- Ohio Western Reserve National Cemetery – 9,350 VA Niches | Seville, OH
- Woodlawn Cemetery Garden Mausoleum – 213 Interior and Exterior Crypts | Syracuse, NY
- Sunset Memorial Park – 322 Crypts in 21 Individual Garden Buildings | Dothan, AL
- Parkview Memorial Cemetery – Technical Assistance | Livonia, MI
- Annie Young Cemetery – Technical Assistance | Pikeville, KY

PAST PROJECT EXPERIENCE

- Mammoth Lofts – New Multi-Family / Retail Development | Sussex, WI
- Sussex Preserve – New Single Family Housing Subdivision Development | Sussex, WI
- Rock Pointe Village – New Multi-Family Apartment Community | Lannon, WI

EDUCATION

- University of Wisconsin-Milwaukee | Milwaukee, WI
Bachelor of Business Administration; Finance and Real Estate

PROFESSIONAL CERTIFICATIONS

- OSHA 30-Hour Training
- Telehandler Training
- Red Cross Certified in First Aid and CPR/AED
- Member: IREM and BOMA/AOMA
- LEED Coursework
- Association of General Contractors (AGC)

CIVIC AFFAIRS

- Chairman Building and Grounds Committee and Capital Campaign Committee, Christ King Parish | Wauwatosa, WI
- North Central Little League Volunteer
- Habitat for Humanity Volunteer
- Wisconsin Humane Society Volunteer



DUSTIN SOTKA
Installation Specialist



PRESENT

2021 – Current Installation Specialist
Tribute Precast Systems | Hartland, WI
Assist with all installation, construction, and labor projects for The Tribute Company's design, precast and construction contracts. Assure that specifications and safety are being strictly followed and work is proceeding on schedule, within budget and in the most effective and efficient ways possible.

PREVIOUSLY

2019 – 2021 Residential Designer, Dickinson Homes Inc. | Kingsford, MI
2015 – 2019 Mechanical Designer, Therma Tron X | Sturgeon Bay, WI
2008 – 2015 General Construction Worker, Sotka Construction | Peshtigo, WI

EDUCATION

- Northeast Wisconsin Technical College | Green Bay, WI
Associate in Science (AS) in Mechanical Design

CONSTRUCTION EXPERIENCE

- Ohio Western Reserve National Cemetery – 9,350 VA Niches | Seville, OH
- Woodlawn Cemetery Garden Mausoleum – 213 Interior and Exterior Crypts | Syracuse, NY
- Sunset Memorial Park – 322 Crypts in 21 Individual Garden Buildings | Dothan, AL

PROFESSIONAL CERTIFICATIONS

- OSHA 30-Hour Training
- Certified SolidWorks Associate



MIGUEL SOTO
Architectural Designer



PRESENT

2021 – Current Architectural Designer
Tribute Design Systems | Hartland, WI
Responsibilities include: cemetery and funeral home design and architectural services and assist with precast concrete supply chain and distribution

PAST EXPERIENCE

2021 – 2023 Architectural Designer, Christopher Kidd & Associates | Menomonee Falls, WI
2018 – 2020 Architectural Designer, ESI Design Services Inc | Hartland, WI
2013 – 2018 Senior Architectural Designer, Direct Supply Inc | Milwaukee, WI

EDUCATION

- University of Wisconsin School of Architecture & Urban Planning | Milwaukee, WI
Masters Degree in Architecture
- University of Puerto Rico | San Juan, Puerto Rico
Bachelors Degree in Environmental Design

DESIGN EXPERIENCE

- Menomonee Falls Police / Library Center | Menomonee Falls, WI
- WSFP Agricultural Farm, State Fair Park | Milwaukee, WI
- GE Medical Systems- Business Ctr. | Waukesha, WI
- Northwestern Mutual Expansion | Franklin, WI
- University of Wisconsin- Platteville, Ullsvik Center Addition & Remodeling | Platteville, WI
- Reuter Residence Hall | La Crosse, WI (Governor's Award for Excellence in Architectural Design)
- Carroll College Student Housing | Waukesha, WI
- Kettle Moraine High School Addition & Renovation | Kettle Moraine, WI
- Notre Dame Middle School Renovation | Milwaukee, WI
- New Elkhorn Middle School | Elkhorn, WI
- Baptist Health Systems, Medical Office Building & Parking Structure | Jackson, Mississippi
- Liberty Dialysis Clinics: Woods Cross, UT | Rockwall, TX | Reno, NV | Colorado Springs, CO
- Elan Westpointe | New Braunfels, TX (2015 ASID Awards- Gold)
- Elan Southpark Meadows | Austin TX (2016 Senior Housing News Awards- Silver)
- Elan Santa Monica | Albuquerque, NM (2017 ASID Awards- Silver)



EXTENDED CLIENT REFERENCES

– Partial List –

Oak Ridge Cemetery Springfield, IL	North Lawn Cemetery Fort Dodge, IA	Diocese of Youngstown Youngstown, OH	Graceland Cemetery Milwaukee, WI
Calvary Cemetery Rock Island, IL	MI Memorial Park Flat Rock, MI	Calvary Catholic Cemetery Fond Du Lac, WI	Nicolet Memorial Gardens Green Bay, WI
Elmhurst Cemetery Joliet, IL	Mt. Elliot Cemetery Association Clinton Township, MI	Fort Howard Memorial Park Green Bay, WI	Roselawn Memory Gardens Williams Bay, WI
Oak Woods Cemetery Chicago, IL	North Shore Memory Gardens Benton Harbor, MI	Calvary Catholic Cemetery Eau Claire, WI	Highland Memory Gardens Beaver Dam, WI
Skyline Memorial Park Monee, IL	New Calvary Catholic Cemetery Flint, MI	Southern WI Veterans Cemetery Union Grove, WI	Restlawn Memorial Park Wausau, WI
Randhill Memorial Park Palatine, IL	St. Joseph Cemetery Lansing, MI	Chippewa Falls Catholic Cemetery Chippewa Falls, WI	Lakeview Memorial Park Oshkosh, WI
Memory Gardens Cemetery Arlington Heights, IL	Catholic Cemeteries of Marquette Marquette, MI	Resurrection Catholic Cemetery Madison, WI	Garden Terrace Mausoleum Sheboygan, WI
Shalom Memorial Park Palatine, IL	MI Memorial Park Flat Rock, MI	Holy Cross Catholic Cemetery Sheboygan, WI	Highland Memorial Park Appleton, WI
Beverly Cemetery Blue Island, IL	St. Hedwig Cemetery Dearborn Heights, MI	Hope Cemetery Chippewa Falls, WI	Sacred Heart Catholic Cemetery Shawano, WI
Catholic Cemeteries of Chicago Chicago, IL	Michelotti-Sawyers Mortuary Billings, MT	Oak Grove Cemetery La Crosse, WI	Catholic Cemeteries of La Crosse La Crosse, WI
Resurrection Cemetery Justice, IL	Vista Verde Memorial Park Albuquerque, NM	The Order of Julian of Norwich Waukesha, WI	Woodlawn Cemetery La Crosse, WI
Chapel Hill Memorial Park Freeport, IL	Diocese of Buffalo Buffalo, NY	North Veterans Cemetery Spooner, WI	Queen of Peace Catholic Cemetery Antigo, WI
Memorial Park Cemetery Rock Island, IL	Sunset Memorial Park North Olmsted, OH	Prairie Home Cemetery Waukesha, WI	Forest Hill Cemetery Wisconsin Rapids, WI
Calumet Park Cemetery Merrillville, IN	Crown Hill Cemetery Twinsburg, OH	Pinelawn Memorial Park Milwaukee, WI	St. Mary's Catholic Cemetery Port Washington, WI
Roselawn Memorial Park Terre Haute, IN	Calvary Cemetery Toledo, OH	Roselawn Memorial Park Madison, WI	Allouez Catholic Cemetery Green Bay, WI
Gardens of Memory Cemetery Muncie, IN	Resurrection Cemetery Toledo, OH	Glenview Memory Gardens Ixonia, WI	West Lawn Memorial Park Racine, WI
Cedar Memorial Park Cedar Rapids, IA			