

TRIBUTE PRECAST

Manufacturing quality precast
concrete cemetery products



CEMETERY PRODUCTS & ACCESSORIES

- Outer Burial Containers
 - Mausoleum Crypts
 - Columbarium Niches
 - Lawn Crypts
 - Memorial Bases
- Retaining Wall Blocks
 - Septic Tanks
- Cemetery Accessories

www.tributeinc.com

262.367.9991

mail@tributeinc.com



Tribute Precast Systems Product Guide

Outer Burial Containers	
Premium	3
Standard	4
Nonstandard	4
Basic	5
Urn Vaults	
Premium	6
Basic	6
Concrete Memorial Bases and Foundations	7
Cemetery Accessories.....	11
Mausoleum Accessories.....	13
Transformer Bases.....	13
Septic Tanks and Accessories.....	14
Modular Precast Crypt System	16
Precast Columbarium Niches	16
Precast Lawn Crypts	16

Tribute Precast – a division of The Tribute Companies, Inc.

Our precast company started in 1939 manufacturing concrete burial vaults from its production facility located in Freeport, Illinois and served cemeteries throughout the central portion of the state.

Tribute became a customer of the company in the early 1980's and acquired ownership in 1983. Soon thereafter, Tribute Precast expanded geographic coverage throughout the Midwest and began introducing new products to benefit its growing list of clients. In 2003, to meet increased production needs, Tribute Precast opened a second manufacturing facility in Ashley, Indiana.

Tribute Precast is one of the largest independent vault companies in the United States. Products are manufactured and marketed under our own brand names, thus giving our clients a distinct competitive advantage over nationally franchised vendors.

High volume, quality production defines our manufacturing facilities. This efficiency coupled with wholesale distribution allows us to offer a complete line of precast products at substantial cost savings to our clients.

Perhaps our most unique products are the modular precast crypts and cremation niche systems. These products are manufactured under strict quality controlled conditions and shipped to the job site ready for installation. General contractors in the local area can easily install these components - thus eliminating the need for special forming supplied only by national mausoleum building companies.

Other items produced in our plants include products oriented to railroad construction projects, septic tanks and specialty items for wall construction, memorial installation and cemetery improvement projects.

Our Mission

The Tribute Companies' mission is to provide exceptional products and services to exceptional cemetery, crematory and funeral home owners and operators.

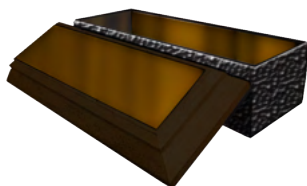
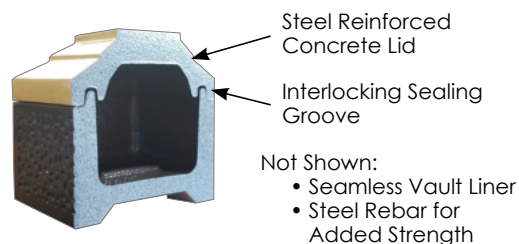
TRIBUTE PRECAST IS PROUD TO BE CERTIFIED BY THE NATIONAL PRECAST CONCRETE ASSOCIATION

The NPCA Plant Certification Program is a challenging test of a plant's ability to produce quality precast concrete products. Administered by a national level engineering and materials science firm, the inspection is a comprehensive look at all aspects of precast concrete production. Precast plants that become certified must meet high standards in all areas of production, safety and information management.



OUTER BURIAL CONTAINERS – Premium

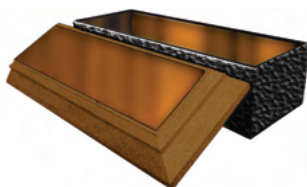
Tribute offers a complete line of outer burial containers designed to match, or exceed, the quality of those distributed through nationally franchised vendors. Your cemetery's operations staff prepares, sets and completes installation of our vaults equating to efficiencies that allow cost savings to clients and increased profitability to the cemetery.



SPARTAN – #505

A top of the line, bronze cap, and the box exterior has a dimple finish. The box and lid are interlocking and sealable.

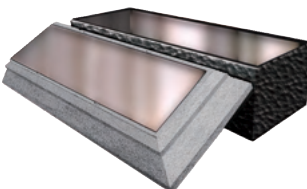
	Interior	Exterior
Width:	30"	34"
Length:	86"	90"
Height:	26¼"	34¼"
Approx. Weight:	2,300 lbs.	



CAMBRIDGE – #504

A top of the line, metal clad container. The interior of the box and lid are lined with 20 gauge copper. The lid surface features a decorative copper cap, and the box exterior has a dimple finish. The box and lid are interlocking and sealable.

	Interior	Exterior
Width:	30"	34"
Length:	86"	90"
Height:	26¼"	34¼"
Approx. Weight:	2,300 lbs.	



KEYSTONE – #506

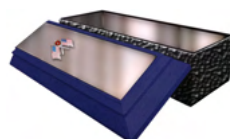
A top of the line, metal clad container. The interior of the box and lid are lined with 20 gauge stainless steel. The lid surface features a decorative stainless steel cap, and the box exterior has a dimple finish. The box and lid are interlocking and sealable. A KEYSTONE can be specially decorated to compliment a casket using softer colors or for a military veteran funeral.

	Interior	Exterior
Width:	30"	34"
Length:	86"	90"
Height:	26¼"	34¼"
Approx. Weight:	2,300 lbs.	

* All weights and dimensions are approximate.



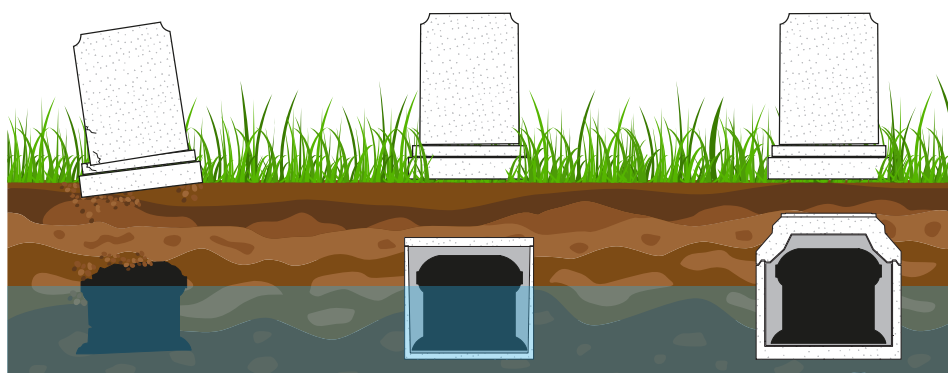
Blush – #506B



Veteran – #506V

VAULT OPTIONS

Description	Part Number
Plastic Vault Bag	VAULT BAG
Rope Seal for Five (5) Vaults	SEAL
Texture Coating or Paint	901 TEXTURE



No Outer Burial Container

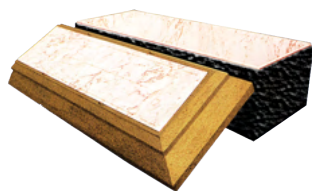
Unlined Outer Burial Container

Lined Outer Burial Container

The primary purpose of a vault is to protect the casket from the soil that settles around it. Vaults also serve to help protect the casket from the natural elements of the Earth.

Tribute vaults carry a 50 year limited warranty for workmanship.

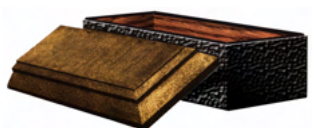
OUTER BURIAL CONTAINERS – Standard



WESTMINSTER – #503

The vault interior and lid are lined with plastic which simulates a fine, imported marble appearance and provides additional protection from the elements. The Gothic window design on the lid's exterior enhances the overall presentation.

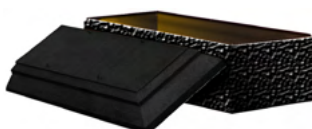
	Interior	Exterior
Width:	30"	34"
Length:	86"	90"
Height:	26¼"	34¼"
Approx. Weight:	2,150 lbs.	



BRECKENRIDGE – #502

This outer burial container features a simulated wood grain plastic liner on the interior of the vault and its lid. Clients selecting a wood casket will find this unit to be a natural complement.

	Interior	Exterior
Width:	30"	34"
Length:	86"	90"
Height:	20"	33"
Approx. Weight:	2,150 lbs.	

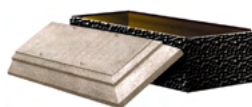


BRENTWOOD – #501

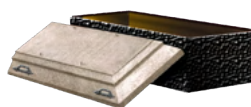
Our most popular lined outer burial container, this vault features a seamless polystyrene liner in the body of the vault and lid. The arched lid interlocks with the base to enhance both beauty and protection features. A BRENTWOOD can be specially decorated with a painted cover and deluxe handles to compliment a decorative casket.

	Interior	Exterior
Width:	30"	34"
Length:	86"	90"
Height:	20"	33"
Approx. Weight:	2,300 lbs.	

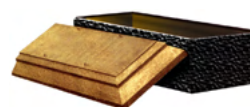
* All weights and dimensions are approximate.



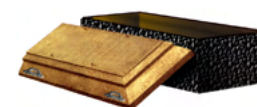
Silver – #501S



Silver Deluxe – #501SD



Gold – #501G



Gold Deluxe – #501GD

OUTER BURIAL CONTAINERS – Nonstandard

Tribute offers the following mid-size, oversize, infant, pet and youth size vaults and cremation containers. If you do not see the dimensions you require, please contact us.

#	Product Name	Width	Interior Length	Height	Width	Exterior Length	Height	Approx. Weight
#701	32" Oversize – Top Seal	32"	87"	28"	36"	91"	32½"	2,800 lbs.
#702	36" Oversize – Flat Top, Non Sealing	36"	92"	30"	40"	96"	34½"	2,250 lbs.
#703	38" Oversize – Top Seal	38"	92"	28"	42"	96"	31¾"	2,350 lbs.
#704	Infant – Top Seal	12"	20"	6¾"	15½"	24½"	10½"	155 lbs.
#705	Infant – Top Seal	14"	28"	12"	16"	29¾"	16½"	240 lbs.
#706	Infant – Top Seal	18"	31¾"	14½"	21½"	35"	19¾"	475 lbs.
#707	Infant – Top Seal	22½"	44"	15½"	25"	47"	20"	570 lbs.
#708	Youth – Flat Top, Non Sealing	22½"	65"	18"	27"	69½"	23½"	1,300 lbs.
#602	Mark IV – Double Depth, Textured Exterior	30"	86"	58"	34½"	92½"	62¾"	5,000 lbs.
#601	Double Depth – Flat Top	30"	86"	58"	34½"	92½"	62¾"	4,800 lbs.
#604	2 Piece Double Depth – Top Unit	30"	87"	28¼"				5,000 lbs.
	Top Seal, Uncoated Bottom Unit	30"	86"	28¼"				

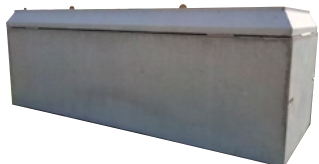
OUTER BURIAL CONTAINERS – Basic



MARK III – #102

The lid of this top seal vault, which is 3" thick and steel reinforced, is designed to interlock with the body to provide tongue and groove sealing protection. The exterior is coated for added protection.

	Interior	Exterior
Width:	30"	34"
Length:	86"	90"
Height:	20"	29¾"
Approx. Weight: 2,000 lbs.		



MENDOTA – #101

The lid of this top seal vault, which is 3" thick and steel reinforced, is designed to interlock with the body to provide tongue and groove sealing protection. Unlike the MARK III, the exterior is not textured.

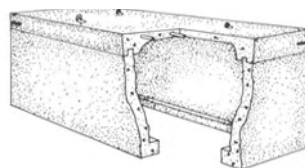
	Interior	Exterior
Width:	30"	34"
Length:	86"	90"
Height:	20"	29¾"
Approx. Weight: 2,000 lbs.		



BELFORD – #401

This bell-shaped unit is designed for the lid to be placed over the casket to rest on a flat concrete base. The unique design provides protection from the elements at a low price. This is an air seal vault.

	Interior	Exterior
Width:	31"	35"
Length:	87"	91½"
Height:	27"	31"
Approx. Weight: 2,150 lbs.		



TRADITION – #103

The Tradition vault is constructed without a bottom to allow the casket to come in full contact with the Earth. This unique container provides the benefit of a burial vault while respecting the teachings of certain faiths and personal beliefs.

	Interior	Exterior
Width:	29"	35"
Length:	85"	89¼"
Height:	25½"	30¾"
Approx. Weight: 1,560 lbs.		



30" GRAVE BOX – #302

A flat top, non sealing vault.

	Interior	Exterior
Width:	30"	33"
Length:	85"	89¾"
Height:	25½"	31"
Approx. Weight: 2,060 lbs.		



29" GRAVE BOX – #301

A flat top, non sealing vault.

	Interior	Exterior
Width:	29"	31¾"
Length:	86½"	89½"
Height:	25½"	30½"
Approx. Weight: 1,645 lbs.		

* All weights and dimensions are approximate.

URN VAULTS – Premium

Cremation containers are available for in-ground interment of cremated remains. These containers are available in various shapes and styles.



ABBEY – #799

The Abbey is a premium vault designed for interment of cremated remains. Its design is complimented by the use of a liner for added strength and protection.

Cambridge – Copper liner and lid piece

Keystone – Stainless Steel liner and lid piece

Veterans – Keystone with Veterans Emblem on Lid

	Interior	Exterior
Width:	12"	15"
Length:	12"	15"
Height:	14"	19"
Approx. Weight:	134 lbs.	



Cambridge – #798



Keystone – #800



Veterans – #797

UNITY – #810

A solid precast concrete vault that will fit on top of an existing full size vault burial. The wider, lower profile fits within the ground when a double burial was not initially planned. The steel reinforced lid and base interlock with a tongue and groove seal. The exterior of the unit is textured for additional protection from the elements.

	Interior	Exterior
Width:	10"	14"
Length:	10"	14"
Height:	10"	12 ½"
Approx. Weight:	93 lbs.	

* All weights and dimensions are approximate.

URN VAULTS – Basic



STANDARD I – #793

An unlined urn vault, no texture

	Interior	Exterior
Width:	9¾"	12"
Length:	13¾"	16"
Height:	9¾"	12"
Approx. Weight:	70 lbs.	



STANDARD II – #802

An unlined urn vault, no texture

	Interior	Exterior
Width:	8"	12"
Length:	8"	12"
Height:	14"	18"
Approx. Weight:	130 lbs.	



OVERSIZE – #794

An unlined urn vault, no texture

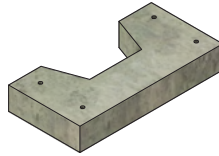
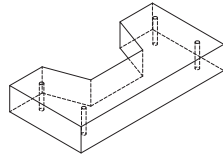
	Interior	Exterior
Width:	12"	16"
Length:	12"	16"
Height:	14"	18"
Approx. Weight:	170 lbs.	

CONCRETE MEMORIAL BASES

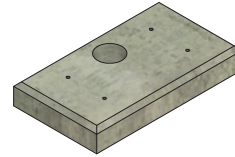
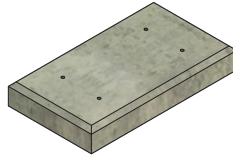
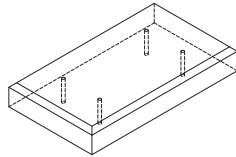
Precast concrete bases are designed to be attached to bronze memorials supplied by most manufacturers. Our bases can be ordered with or without a 2" exposed border. The exposed border base features a smooth finish and beveled edge which helps reduce chipping and mower damage. Bases are also available for vase assemblies, benches, corner markers and transformer pads.

Please call for a complete list of available bases.

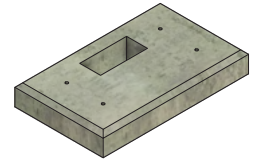
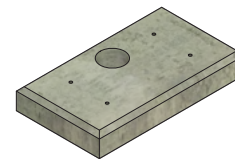
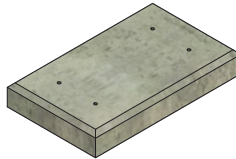
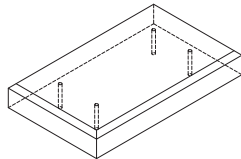
If your size is not listed, Tribute Precast Systems will custom manufacture for your application. Call us today!



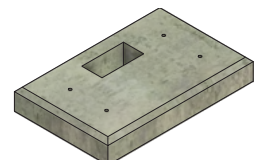
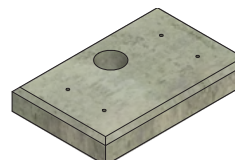
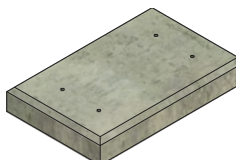
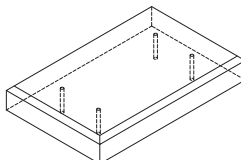
Bronze Size	Base Width	Base Depth	Base Height	Approx. Weight	No Vase	6" Diameter Round Vase
22" x 11"	26"	15"	3½"	60 lbs.	2211-NV	2211-RV



Bronze Size	Base Width	Base Depth	Base Height	Approx. Weight	No Vase	6" Diameter Round Vase
24" x 12"	28"	16"	4"	110 lbs.	2412-NV	2412-RV



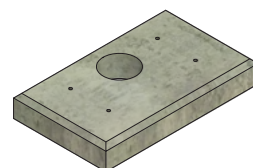
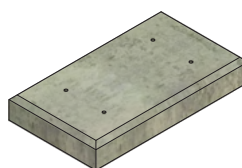
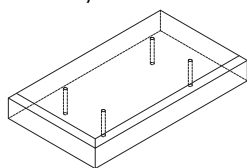
Bronze Size	Base Width	Base Depth	Base Height	Approx. Weight	No Vase	6" Diameter Round Vase	9" x 7" x 4" Rectangular Vase
24" x 13"	28"	17"	4"	115 lbs.	2413-NV	2413-RV	2413-REV



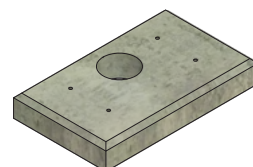
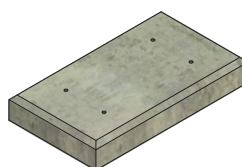
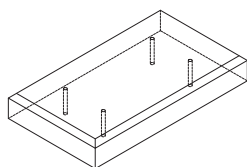
Bronze Size	Base Width	Base Depth	Base Height	Approx. Weight	No Vase	6" Diameter Round Vase	8" x 3⅞" x 4" Rectangular Vase
24" x 14"	28"	18"	4"	120 lbs.	2414-NV	2414-RV	2414-REV

* All weights and dimensions are approximate.

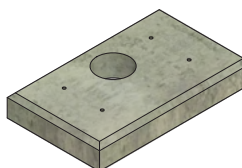
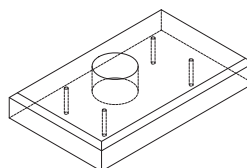
Concrete Memorial Bases (continued)



Bronze Size	Base Width	Base Depth	Base Height	Approx. Weight	No Vase	6" Diameter Round Vase
28" x 16"	32"	20"	4"	160 lbs.	2816-NV	2816-RV

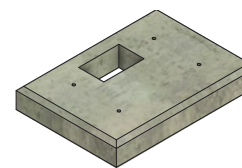
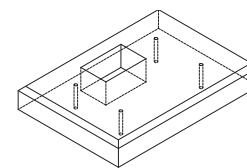


Bronze Size	Base Width	Base Depth	Base Height	Approx. Weight	No Vase	6" Diameter Round Vase
28" x 17"	32"	21"	4"	164 lbs.	2817-NV	2817-RV

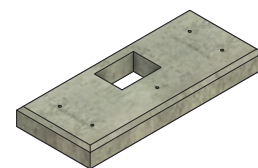
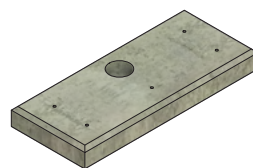
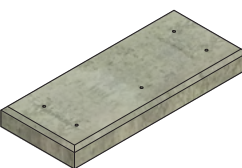
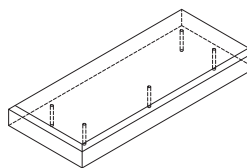


Bronze Size	Base Width	Base Depth	Base Height	Approx. Weight	6" Diameter Round Vase
28" x 18"	32"	22"	4"	168 lbs.	2818-RV

If your size is not listed, Tribute Precast Systems will custom manufacture for your application. Call us today!



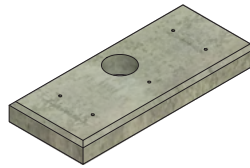
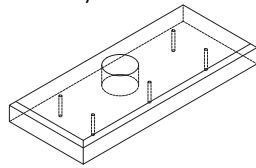
Bronze Size	Base Width	Base Depth	Base Height	Approx. Weight	9" x 7" x 4" Rectangular Vase
28" x 20"	32"	24"	4"	175 lbs.	2820-REV



Bronze Size	Base Width	Base Depth	Base Height	Approx. Weight	No Vase	6" Diameter Round Vase	9" x 6 3/8" x 4" Rectangular Vase
36" x 13"	40"	17"	4"	140 lbs.	3613-NV	3613-RV	3613-REV

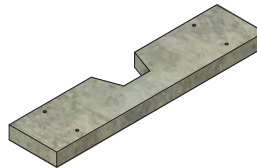
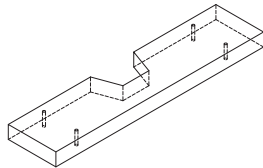
* All weights and dimensions are approximate.

Concrete Memorial Bases (continued)

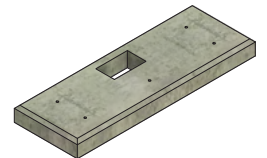
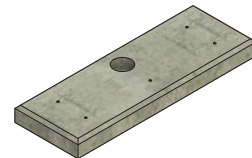
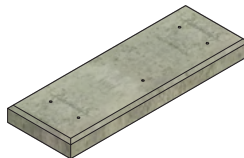
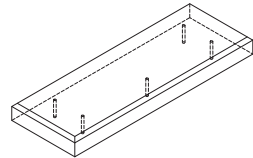


If your size is not listed, Tribute Precast Systems will custom manufacture for your application. Call us today!

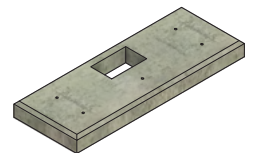
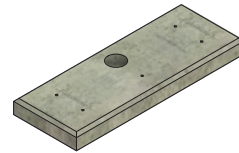
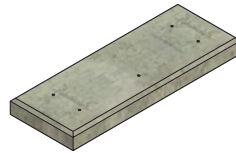
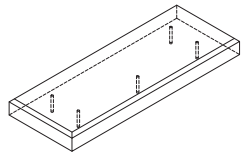
Bronze Size	Base Width	Base Depth	Base Height	Approx. Weight	6" Diameter Round Vase
40" x 17"	44"	21"	4"	155 lbs.	4017-RV



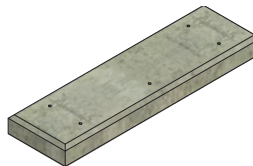
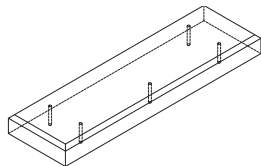
Bronze Size	Base Width	Base Depth	Base Height	Approx. Weight	No Vase	6" Diameter Round Vase
44" x 11"	48"	15"	3½"	150 lbs.	4411-NV	4411-RV



Bronze Size	Base Width	Base Depth	Base Height	Approx. Weight	No Vase	6" Diameter Round Vase	8½" x 5" x 4" Rectangular Vase
44" x 13"	48"	17"	4"	160 lbs.	4413-NV	4413-RV	4413-REV



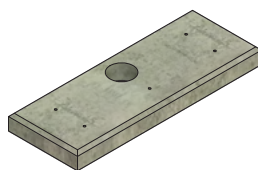
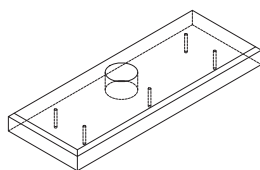
Bronze Size	Base Width	Base Depth	Base Height	Approx. Weight	No Vase	6" Diameter Round Vase	10" x 6" x 4" Rectangular Vase
44" x 14"	48"	18"	4"	175 lbs.	4414-NV	4414-RV	4414-REV



Bronze Size	Base Width	Base Depth	Base Height	Approx. Weight	No Vase
48" x 14"	52"	18"	4"	190 lbs.	4814-NV

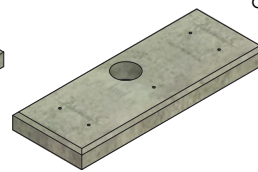
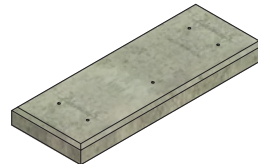
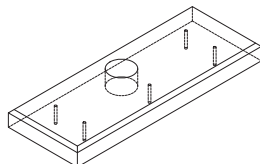
* All weights and dimensions are approximate.

Concrete Memorial Bases (continued)



If your size is not listed, Tribute Precast Systems will custom manufacture for your application. Call us today!

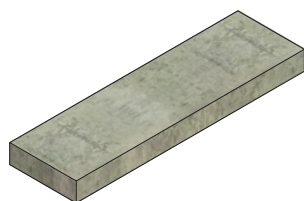
Bronze Size	Base Width	Base Depth	Base Height	Approx. Weight	6" Diameter Round Vase
48" x 17"	52"	21"	4"	230 lbs.	4817-RV



* All weights and dimensions are approximate.

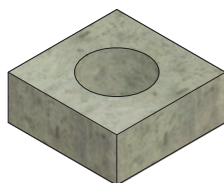
Bronze Size	Base Width	Base Depth	Base Height	Approx. Weight	No Vase	6" Diameter Round Vase
48" x 18"	52"	22"	4"	235 lbs.	4818-NV	4818-RV

BENCH BASE / FOUNDATION



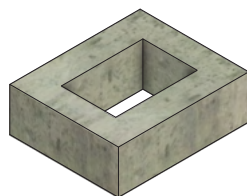
Base Width	Base Depth	Base Height	Approx. Weight	Bench Base
48"	14"	4"	205 lbs.	4814-BB
48"	18"	4½"	235 lbs.	4818-BB
48"	24"	4½"	350 lbs.	4824-BB
52"	18"	4½"	440 lbs.	6024-BB

ROUND VASE BASE

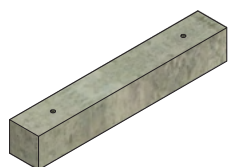


Base Width	Base Depth	Base Height	Vase Diameter	Approx. Weight	Bench Base
10"	10"	4"	5½"	12 lbs.	1010A
10"	10"	4"	5¾"	12 lbs.	1010B
10"	10"	4"	6"	12 lbs.	1010

RECTANGULAR VASE BASE



Base Width	Base Depth	Base Height	Vase Size	Approx. Weight	Part Number
10"	12"	4"	8½" x 5" x 4"	12 lbs.	1012
14"	10"	4"	8½" x 5" x 4"	13 lbs.	1410



SCROLL FOUNDATION

Width	Depth	Height	Approx. Weight
26"	4"		



CORNER MARKER

Width	Depth	Height	Approx. Weight
7"	6¾"		

CEMETERY ACCESSORIES



COLUMN FINIALS

These finishing design elements can enhance the appearance of your cemetery.

Sphere:	6" Dia.
Base Width:	24"
Base Length:	24"
Base Height:	6½"
Overall Height:	23"
Approx. Weight:	



SECTION IDENTIFICATION BOLLARDS

Section signs can be added to the bollards to provide useful identification throughout the property.

Width:	10"
Length:	10"
Height:	50" with base
Base:	23" x 23" x 6"
Approx. Weight:	260 lbs.



HOSE BIB ASSEMBLIES

Protect your water systems with Tribute Precast's hose bib assembly. The exposed aggregate concrete assembly hides and protects irrigation piping.

Width:	18"
Length:	38"
Height:	40"
Approx. Weight:	800 lbs.



PARKING STOPS – #IPS

High quality concrete parking stops protect both landscaping and structures surrounding parking areas.

Width:	11½"
Length:	78"
Height:	2½"
Approx. Weight:	315 lbs.

* All weights and dimensions are approximate.



WALL BLOCKS – #WB01

Tribute Precast wall blocks can be used in various landscaping projects including: retaining walls, feature areas, and to create landscape material storage areas.

Width: 47¾"
Length: 23¼"
Height: 30½"
Approx. Weight: 2,300 lbs

WALL BLOCK CAP – #WB02

Caps can be used to enhance a wall block for a finished look.

Width: 26"
Length: 72"
Height: 8"
Approx. Weight: 750 lbs



TRASH RECEPTACLE

Heavyweight trash receptacles, designed to hold wire basket inserts, are manufactured with a colored concrete and exposed aggregate finish to enhance their overall appearance.

Width: 24¾"
Height: 29½"
Approx. Weight: 125 lbs.



PLANTER LARGE

Heavyweight planters are manufactured with a colored concrete and exposed aggregate finish to enhance their overall appearance.

Width: 34"
Height: 22"
Approx. Weight: 175 lbs.



PLANTER SMALL

Heavyweight planters are manufactured with a colored concrete and exposed aggregate finish to enhance their overall appearance.

Width: 25¾"
Height: 16¾"
Approx. Weight: 130 lbs.



SPLASH BLOCKS – #SPL

Help keep building downspouts in place and direct water runoff.

Width: 10"
Length: 36"
Height: 6"
Approx. Weight: 75 lbs



PICNIC TABLE

Precast picnic tables deter theft and damage.

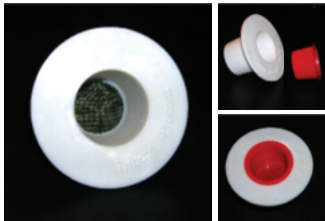
Width: 70"
Length: 75"
Height: 31"
Approx. Weight: 1,300 lbs

HANDICAP ACCESSIBLE PICNIC TABLE

Width: 70"
Length: 89"
Height: 31"
Approx. Weight: 1,500 lbs

* All weights and dimensions are approximate.

MAUSOLEUM ACCESSORIES



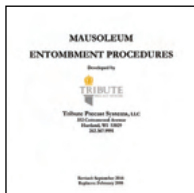
VENT SCREENS AND CAPS

Tribute's patented vaking an entombment. The screens are made from durable hard plastic and contain a fine mesh wire cloth to prevent insect infestation within the crypt chamber. Plastic caps are available to seal the vent until the time of the entombment. Prior to placing the casket in the crypt, the caps are removed to promote air flow around the casket.



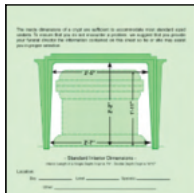
CRYPT CASKET TRAYS

Tribute can provide the plastic crypt trays that are intended to be placed under the casket at time of entombment. Tribute recommends the use of trays for all entombments.



ENTOMBMENT PROCEDURES

Recommended entombment procedures are available to all of our mausoleum crypt customers free of charge.



CRYPT & NICHE DIMENSION SHEETS

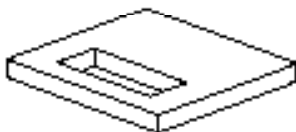
Customized graphic dimension sheets help the cemetery's clients determine the correct casket or urn size for entombment/inurnment.

TRANSFORMER BASES

Tribute Precast Systems Transformer Bases are made of steel reinforced 5,000 psi concrete and are designed to support various standard size transformers. Refer to utility for transformer pad specifications and requirements.

TRANSFORMER BASE – #TB

Concrete Pad 24" x 30"

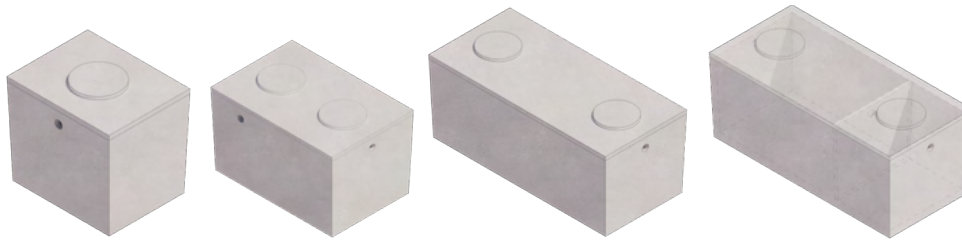


If your size is not listed, Tribute Precast Systems will custom manufacture for your application. Call us today!

* All weights and dimensions are approximate.

SEPTIC TANKS AND ACCESSORIES

Various capacity septic tanks and accessories are available to dealers and the public. We offer free delivery within 25 miles of our Freeport, IL manufacturing facility. To qualify for dealer discounts, resale certificates must be on file with Tribute. Construction companies, plumbers, contractors, private homeowners, cemetery and funeral home owners and others can contact us to provide a price for product and delivery to your location.

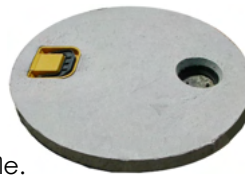


Part #	Description	Width	Length	Height	Inlet from Bottom	Weight*
S500	500 Gallon Pump Station	67"	53"	59"	49½"	4,400 lbs.
S1000	1000 Gallon Septic Tank	67"	97"	59"	49½"	8,000 lbs.
S1500	1500 Gallon Septic Tank	67"	146"	59"	49½"	10,750 lbs.
S1500C	Two Compartment Septic Tank	67"	146"	59"	49½"	10,800 lbs.

* All weights and dimensions are approximate.

ACCESS COVER

Cover with 2" lip and polyethylene baffle.



Diameter	Height	Weight*
28"	2-½"	145 lbs.

DISTRIBUTION BOX

Box features 4¼" holes with polylock seals, lid, one inlet and five outlets.



Width	Length	Height	Weight*
30¼"	13½"	13¾"	260 lbs.

FILTERS

Easy to install commercial-grade effluent filter and housing unit for use with Tribute Septic Tanks.



Description	Part #
T-Baffle Housing and Effluent Filter Combination	EF6
T-Baffle Housing	TB6

Tribute Precast Systems, LLC Septic Tanks are approved by the Wisconsin Department of Safety.

- Single-Compartment Holding, Pump or Septic Tanks: 500, 1000 and 1500
eSLA PTO No.: PP-072100029-PTOPHTC
- Two-Compartment Holding, Pump or Septic Tanks: 1000/500
eSLA PTO No.: PP-072100030-PTOPHTC

RISER / EXTENSION PIPE

Concrete riser pipes are available in a variety of heights to run vertically from the pump-out openings or access ports at the top of a septic tank to about ground level.

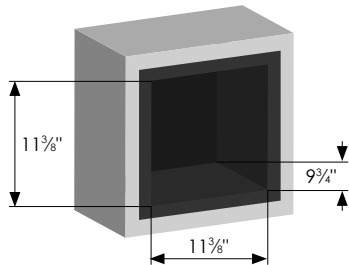
Outside Diameter	Inside Diameter	Height	Weight*
28"	24"	6"	75 lbs.
28"	24"	12"	150 lbs.
28"	24"	18"	230 lbs.
28"	24"	24"	310 lbs.



PRECAST CREMATION NICHE

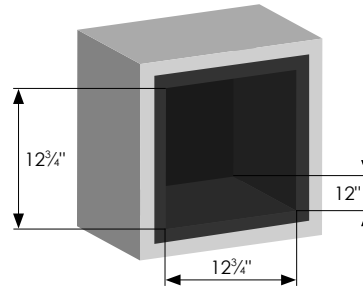
Quality precast concrete niches guaranteed to stand the test of time. Manufactured in environmentally controlled facilities that pass rigid standards of quality through the National Precast Concrete Association, Tribute cremation niches allow for clean, expedited installation for columbarium buildings of any size.

#803 SMALL PLASTIC LINED



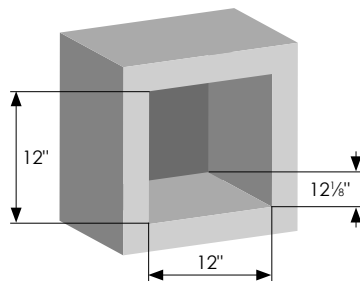
- Plastic lined niche provides smooth finished surface
- Assure the utmost, long term protection from the elements
- Accommodates one cremation urn

#804 LARGE PLASTIC LINED



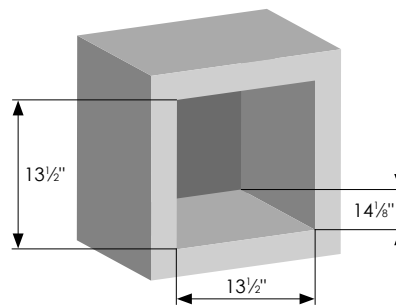
- Plastic lined niche provides smooth finished surface
- Assure the utmost, long term protection from the elements
- Accommodates one cremation urn

#805 SMALL UNLINED



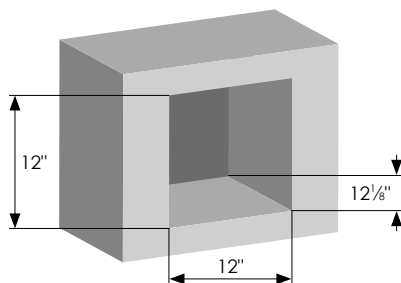
- Tribute's most popular niche style
- Accommodates one cremation urn
- Use two #805 niches side by side to match width of #808 niche
- Two niche units conjoined vertically equals dimension of Tribute crypt front

#806 LARGE UNLINED



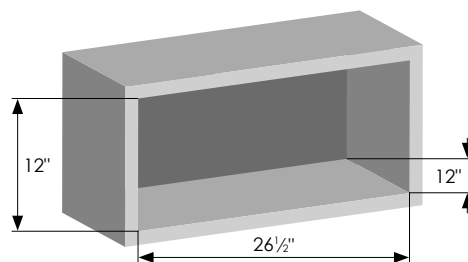
- Accommodates one cremation urn
- Tribute's largest niche offering

#807 SMALL UNLINED



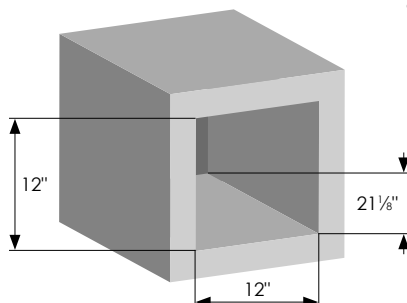
- Accommodates one cremation urn
- Two niche units conjoined horizontally equals dimension of Tribute crypt front

#808 UNLINED SIDE-BY-SIDE COMPANION



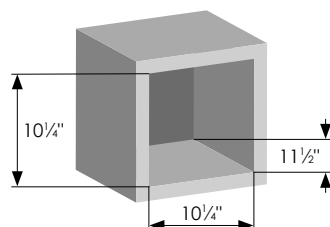
- Wider option to accommodate two cremation urns
- Use two #805 niches side by side to match width of #808 niche

#809 UNLINED DOUBLE DEPTH COMPANION



- Deeper option to accommodate two cremation urns

#811 SMALL SPACE SAVER UNLINED



- Increase inventory within a smaller footprint or height
- Accommodates one cremation urn

Note: Niche unit dimensions vary slightly from front to rear. Consult Tribute Precast System's full product specification for exact dimensions and details.

PRECAST CRYPT SYSTEM

Since introducing our modular system over 30 years ago, more than 400,000 Tribute Precast crypts have been installed in mausoleums throughout the U.S. and Canada. Our system has been incorporated into interior-only mausoleums and garden buildings, as well as single and multistory facilities.

Overwhelming acceptance of the Tribute System for...

- Speed and Ease of Installation
- Superior Ventilation Capabilities
- Structure Integrity
- Flexible Design



St. Mary's Cemetery, Dewitt, NY

Tribute Precast supplied and installed 1,128 mausoleum crypts and 1,516 cremation niches.



PRECAST COLUMBARIUM NICHES

Tribute Precast offers a variety of cremation niche styles for creative columbarium design and versatility.

- Single
- Side-by-side Companion
- Double-depth Companion

Our niches can be used with multiple stone hanger systems, including concealed and rosette.

Niches can be clad with a variety of materials from stone to masonry.

Tribute can provide closure panels that are customized with the cemetery name and logo.

PRECAST LAWN CRYPTS

The Tribute Precast lawn crypt system is available in single and double depth units which are compatible in style and structural qualities. Units may or may not be exterior coated – depending on client specifications. Special features found in our lawn crypt system include:

- Lids are flat – thus reducing time of excavation when interments are made.
- Lid construction incorporates steel rebar for superior strength.
- Lids include both stainless steel lifting hooks and cable grooves at each corner.
- Double depth unit comes with a one piece inner shelf which rests on a built-in channel. This ensures a close fit and eliminates the need for inserting separate pins at time of placement.



Southern Wisconsin Veterans Cemetery, Union Grove, WI

Lawn Crypt Installations for this cemetery included:

- Phase I: 4,650 lawn crypts
- Phase II: 3,251 lawn crypts
- Phase IIIB: 3,484 lawn crypts